

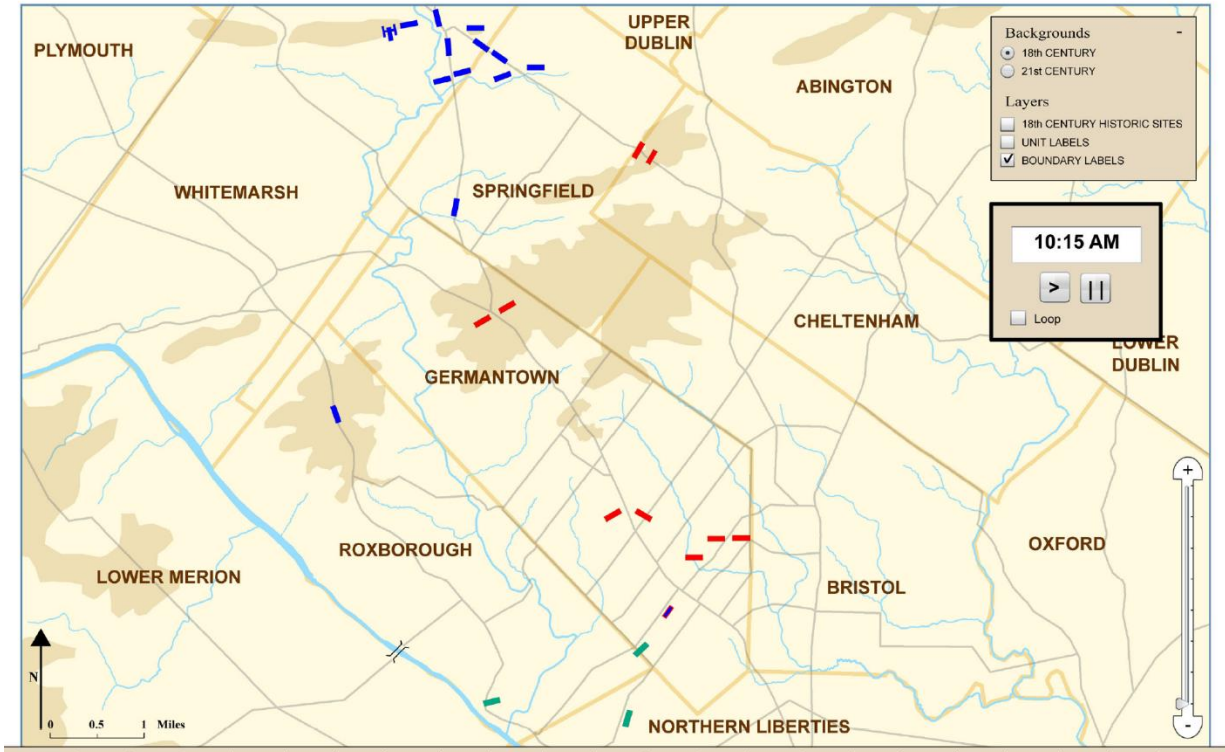
Name: \_\_\_\_\_ Date: \_\_\_\_\_

Copyright © 2018. Breakthrough of Greater Philadelphia and Cliveden • All Rights Reserved • This curriculum is funded by the Haley Foundation and the African American Cultural Heritage Action Fund of the National Trust for Historic Preservation with support from the Doris Duke Charitable Foundation.

## Natural Resources in Revolutionary Philadelphia

**Directions:** Review the map below, which was taken from a time lapse re-enactment of the Battle of Germantown. Using what you know about the Revolutionary War and the given map, what are five reasons that the British and the Patriots might be interested in fighting for control for this land? Answer in complete sentences.

18<sup>th</sup> Century Map of Germantown



1. \_\_\_\_\_  
\_\_\_\_\_
2. \_\_\_\_\_  
\_\_\_\_\_
3. \_\_\_\_\_  
\_\_\_\_\_
4. \_\_\_\_\_  
\_\_\_\_\_
5. \_\_\_\_\_  
\_\_\_\_\_

Name: \_\_\_\_\_ Date: \_\_\_\_\_

Copyright © 2018. Breakthrough of Greater Philadelphia and Cliveden • All Rights Reserved • This curriculum is funded by the Haley Foundation and the African American Cultural Heritage Action Fund of the National Trust for Historic Preservation with support from the Doris Duke Charitable Foundation.

Define **Resource**: \_\_\_\_\_

List Three Resources:

1. \_\_\_\_\_
2. \_\_\_\_\_
3. \_\_\_\_\_

Define **Natural Resource**: \_\_\_\_\_

Define **Man-Made Resource**: \_\_\_\_\_

Put a checkmark in the correct column based on the resource type:

<b>Resource</b>	<b>Natural</b>	<b>Man-Made</b>	<b>Why?</b>
Diamonds			
Paper			
Clay			
Concrete			
Plywood			
	X		
		X	

Define **Renewable Resource**: \_\_\_\_\_

Define **Non-Renewable Resource**: \_\_\_\_\_

<b>Resource</b>	<b>Renewable</b>	<b>Non-Renewable</b>	<b>Why?</b>
Salmon			
Coal			

Name: \_\_\_\_\_ Date: \_\_\_\_\_

Copyright © 2018. Breakthrough of Greater Philadelphia and Cliveden • All Rights Reserved • This curriculum is funded by the Haley Foundation and the African American Cultural Heritage Action Fund of the National Trust for Historic Preservation with support from the Doris Duke Charitable Foundation.

### Sunlight

**Directions:** In small groups, you will walk around the grounds of Cliveden and strive to answer the following questions.

1. What are two resources that could be used to generate heat in the winter at Cliveden in the 1700s? Are they natural or manmade?

a. \_\_\_\_\_

b. \_\_\_\_\_

2. How could people living in 1700s Cliveden keep things cool during the summer?

\_\_\_\_\_  
\_\_\_\_\_  
\_\_\_\_\_

3. How could people in 1700s Cliveden access water on a regular basis?

\_\_\_\_\_  
\_\_\_\_\_  
\_\_\_\_\_

4. Name two sources of light on the property. Are they natural or manmade?

a. \_\_\_\_\_

b. \_\_\_\_\_

5. Which resource in this environment do you think is the oldest? Why? Is it natural or manmade?

\_\_\_\_\_  
\_\_\_\_\_  
\_\_\_\_\_

6. What are two things that allow for the spread of disease? What are two things that limit the spread of disease?

a. \_\_\_\_\_

b. \_\_\_\_\_

7. Name at least two ways that the Cliveden house has been preserved into today's time.

\_\_\_\_\_  
\_\_\_\_\_  
\_\_\_\_\_

Name: \_\_\_\_\_ Date: \_\_\_\_\_

Copyright © 2018. Breakthrough of Greater Philadelphia and Cliveden • All Rights Reserved • This curriculum is funded by the Haley Foundation and the African American Cultural Heritage Action Fund of the National Trust for Historic Preservation with support from the Doris Duke Charitable Foundation.

8. Your carbon footprint is the amount of greenhouse gases that are emitted in the air because of your activities. Many activities contribute to your carbon footprint such as heating your house, how you get to school, and how much trash you throw away. Did people living in 1700s Cliveden have a larger or smaller carbon footprint than the average person today? Why do you think that?

---

---

---

9. What about the Cliveden landscape has been altered by humans in the last 200 years? How do you think that has impacted the environment?

---

---

---

10. How do you think people got from Center City Philadelphia to Cliveden in the 1700s? How long do you think it took? Explain your estimate. What resources would have been used?

---

---

---

---

---

---